



CDSOA Northeast Fleet Raritan Bay Float-In

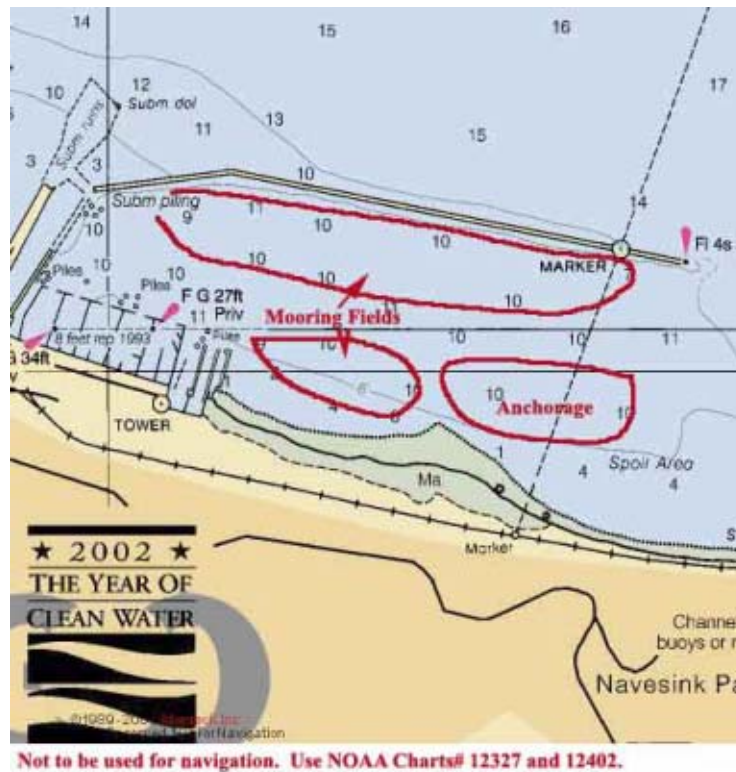
Atlantic Highlands Yacht Club
At the Atlantic Highlands Municipal Harbor
Atlantic Highlands, NJ

September 24-25, 2005

Questions? Contact Event Organizer: Catherine Monaghan Ph: 732-381-3549.
Email: c_m_monaghan@comcast.net

Event Information:

The Raritan Bay Float-in, hosted by the Northeast Fleet of the CDSOA, will take place Saturday and Sunday, **September 24-25, 2005**. If conditions are favorable, we will form a raft-up in the anchorage south of the breakwater and mooring field at Atlantic Highlands, NJ. This area is indicated on the chart facsimile below. If we can't raft-up, and that's quite often the case, captains have the option of anchoring separately or renting moorings from the AHYC then crews will gather on the "host" vessel.



If you'd like a mooring rather than anchoring, they are available from the Atlantic Highlands Yacht Club, (phone: **732-291-1118**), for **\$35** per night. This fee gets you unlimited use of the yacht club launch, access to the shore facilities, which include showers and rest rooms, guest privileges in the AHYC clubhouse, and access to the club dock. Please contact the YC to reserve your mooring. The yacht club's launch driver monitors **VHF Ch. 9**. The launch will be available from 8:00 a.m. to midnight on Saturday, 8:00 a.m. to 10:00 p.m. on Sunday.

Dinner will be potluck and shared amongst the rafted crews. So please bring snack/meal items to be shared. Don't forget to bring your preferred beverages!

Let's do breakfast together ashore on Sunday morning!

Please monitor **VHF Ch. 16** and **72** for fleet communications.

There are no registration fees associated with this event. But please [REGISTER ONLINE](#) or contact Cathy Monaghan via e-mail at c_m_monaghan@comcast.net or call **732-381-3549** and let her know you'll be there.



Photo courtesy of: Official Website of Atlantic Highlands, NJ



Photo courtesy of: Atlantic Highlands Yacht Club



Photo courtesy of: Official Website of Atlantic Highlands, NJ

<http://www.ahyc.net/>

All owners of both Cape Dory power and sailboats are welcome to attend.

If you have any questions regarding this event, please contact **Catherine Monaghan**, 732-381-3549 or at c_m_monaghan@comcast.net.

NOTE: All captains are responsible for their own navigation and for the safety of their crew and vessel.

Driving Directions:

From Garden State Parkway North:

Staying in the local lanes at the Amboy toll plaza, get off parkway at Exit 114 "Middletown / Holmdel". After the toll, stay in the left lane. At the traffic light take a left turn onto Red Hill Road. At the 2nd traffic light, take a right turn onto Dwight Road. Follow Dwight Rd. to the first light. At that light take a left turn onto Middletown -Lincroft Road. At the next light, make a right turn onto Oak Hill Road. Follow straight over the railroad tracks to the 2nd light. Cross over highway 35 and continue straight-Oak Hill Rd. will turn into Chapel Hill Road. At the end of Chapel Hill Rd., make a right turn onto Kings Highway East. Take the first left turn onto Stillwell Road and follow down the hill to Bayshore Middle School. At the school, take a right turn onto Leonardville Road. Follow straight onto Route 36 East. At the first light, take the jughandle and follow signs for "Atlantic Highlands Municipal Harbor". Go across Highway 36 onto First Avenue-follow this all through town. Take a right turn onto Sutton Walk and follow signs for "Municipal Harbor Launching Ramp". The clubhouse is atop the Shore Casino Restaurant. Use the left entrance door (with your back toward the water) at Shore Casino, enter the door in the back and go upstairs. The AHYC hoist is in the yard, on the left beyond the launching ramp.

From Garden State Parkway South:

Stay in the local lanes as you pass through the Asbury Toll plaza, get off parkway at exit 109. Get in the middle lane, which will cross straight over Newman Springs Road onto Half Mile Road. At the second traffic light, make a right onto West Front Street. Follow to the next traffic light. Turn left onto Hubbard Avenue. At the next traffic light, make a right turn onto Navesink River Road. Follow Navesink River Road straight across Highway 35 and continue straight until you start to travel uphill. Take a left turn onto McClees Road and follow straight to the end. At the end of McClees Road, make a right turn onto Monmouth Avenue. At the next stop sign, make a left turn onto Navesink Avenue. Follow down the hill to the right. At the traffic light, make a left turn onto Highway 36. Follow straight down to the next traffic light. Make a right turn onto First Avenue and continue down through town. Take a right turn onto Sutton Walk and follow signs for "Municipal Harbor Launching Ramp". The clubhouse is atop the Shore Casino Restaurant. Use the left entrance door (with your back toward the water) at Shore Casino, enter the door in the back and go upstairs. The AHYC hoist is in the yard, on the left beyond the launching ramp.