



CDSOA Maine Cruise Penobscot Bay and Mount Desert Isle Region August 11-15, 2008

Questions? Contact Event Organizer **Catherine Monaghan** Ph: 732-381-3549; Email: c_m_monaghan@comcast.net
Or **Carl Thunberg** Ph: 603-226-4638; Email: cthurberg@nobisengineering.com

Prepared by: Carl Thunberg & Catherine Monaghan

This year's Maine Cruise takes place on scenic Penobscot Bay and Mount Desert Island during the week of August 11th thru August 15th. The itinerary is as follows:

Maine Cruise:

Mon, Aug 11 --	Carver Cove (Vinalhaven)
Tue, Aug 12 --	Billings Cove (Deer Isle)
Wed, Aug 13 --	Burnt Coat Harbor (Swans Island)
Thu, Aug 14 --	Northeast Harbor (Mount Desert Island) – Visit Asticou & Thuya Gardens
Fri, Aug 15 –	Northeast Harbor – Explore Acadia National Park on your own or in groups. Group dinner ashore.

If you can't sail with us for the entire cruise, please feel free to join our group for as many or as few days as meets your schedule. We'd love to see you, if only for a day!

**Fleet communications will be on VHF Ch. 16 and 68.
Please monitor these channels during the cruise.
Hail the "Cape Dory Fleet".**

At each destination, if conditions are settled, we ask that you please contemplate allowing another CD to raft-up with your boat; this decision is entirely up to the captain of each vessel. We will be having two potluck cocktail and dinner get-togethers – the first on Monday evening and the second on Tuesday – so keep that in mind when provisioning. Your potluck entrée or side should be enough to feed 8. Don't worry, with all of the crews contributing, we will have plenty of food. Please bring your own beverages and a snack to share during cocktail hour. We will provide the plates, cups and utensils.

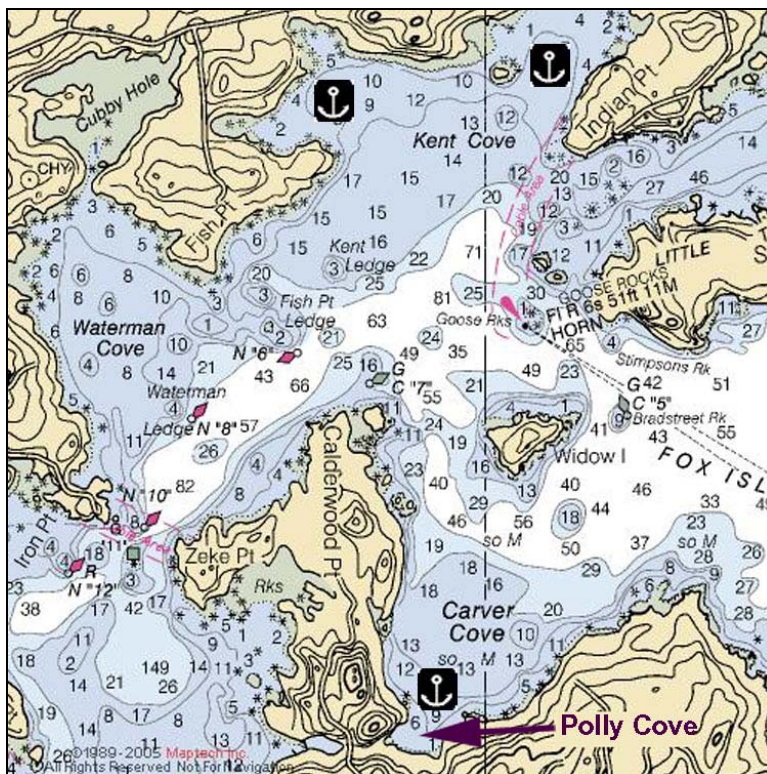
Monday, 8/11—Carver Cove

Monday, August 11th, Cape Dorys should begin arriving in **Carver Cove** anytime after 2:00 p.m. Depending on where the boats are coming from, they may continue to arrive through the evening so be sure to allow room for other boats to anchor nearby.

Be careful not to confuse Carver Cove with Carver's Harbor which is located on the southern end of Vinalhaven Island! Carver Cove is a large cove located on the eastern end of **Fox Islands Thorofare** on Vinalhaven's northeastern shore and is sheltered from all directions except northeast. If the wind is forecast to blow from the northeast, we'll use **Kent Cove** as an alternate. Kent Cove is located immediately north of Carver Cove and is indicated on the chartlet in **Figure 1** below.

Fox Islands Thorofare is buoyed from **east to west**, so keep that in mind. If you're entering Fox Islands Thorofare **from the west**, you will be *LEAVING* port (Red Left Leaving!). **Carver Cove** is easy to enter with no significant hazards to navigation. Pass around either side of Widow's Island then head southward and

anchor anywhere off Polly Cove (do not enter shallow Polly Cove) in the area indicated in the chartlet in **Figure 1** below in 9-15 feet of water at MLW. Holding is good in mud.



Not to be used for navigation. Use NOAA Charts: 13308, 13302, 13305.

Figure 1. Carver Cove and Kent Cove
Vinalhaven and North Haven
44° 07.11N 68° 50.17W

High tide at **Carver Cove** is approximately 10 minutes before high in Portland. **Mean tidal range is about 9.5 feet.**

In the evening we'll all gather on one or two of the boats for welcome cocktails and a potluck dinner (this is where at least one 2-boat raft will be handy). So bring one or two snack items to share with the rest of the group and the fixin's for your favorite beverage. Then it's potluck for dinner. Whatever you bring is what we'll have.

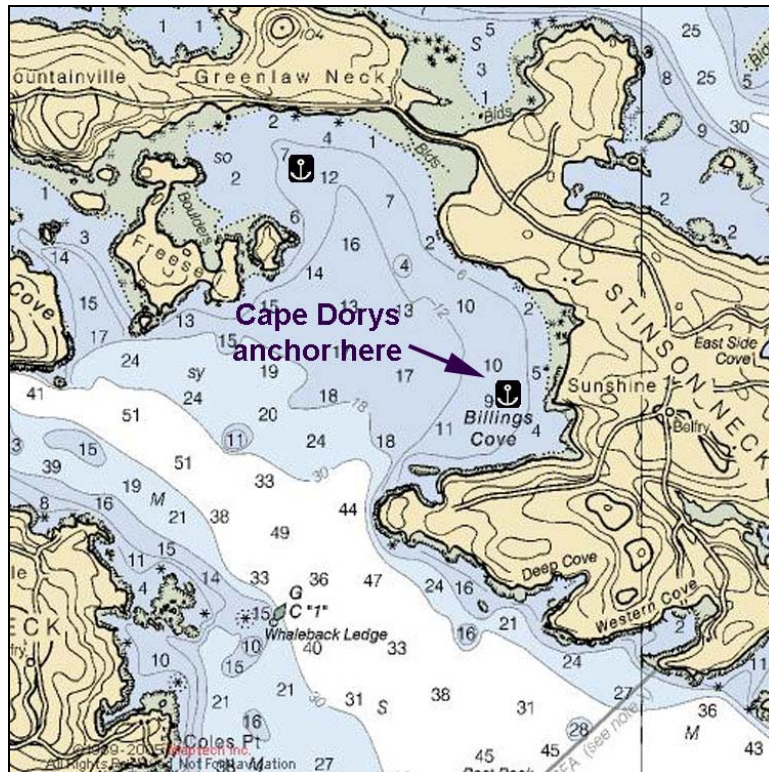
Tuesday, 8/12—Billings Cove, Deer Isle – 19 nm *(all mileage is approximate)*

Next we'll be crossing East Penobscot Bay and heading northeastward for **Billings Cove** on Deer Isle's east coast near Southeast Harbor. You will approach Deer Isle by either Merchants Row or the Deer Isle Thorofare. Either route promises spectacular scenery. Merchants Row is easier to navigate and there's plenty of room to sail. There are several good lunch spots among the islands of Merchants Row. We'll keep it loose for now and select a lunch spot during the cruise.

The entrance to Billings Cove is fairly straightforward. Approach the entrance to Southeast Harbor, then round the point off Stinson Neck and anchor in Billings Cove in 9 to 11 feet at MLW.

Here we'll gather for some more boat-hopping and another informal group potluck on a couple rafted boats; or join the group for cocktails and snacks, then head back to your boat and eat on your own. If you're planning on joining the potluck, be prepared to bring enough to serve 8, beverages for yourself, and some snacks to share during cocktail hour.

Please try to anchor in the area indicated on the chartlet in **Figure 2** below.



Not to be used for navigation. Use NOAA Charts: 13313, 13316

Figure 2. Billings Cove

Deer Isle

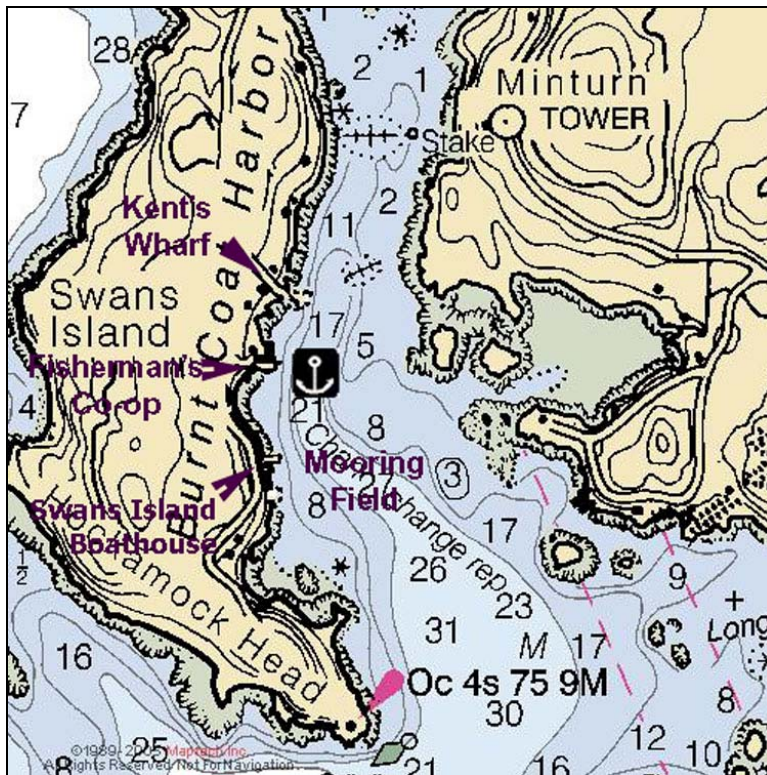
44° 11.90'N 68° 35.63'W

High tide is approximately 15 minutes before high at Portland. **Mean tidal range is about 10 feet.**

Wednesday, 8/13—Burnt Coat Harbor – 12 nm

From Southeast Harbor we'll be heading southeast to Swans Island and **Burnt Coat Harbor**. The entrance to the harbor is through Toothacher Bay and is well marked. According to the cruising guides, there are reports of anchors getting fouled in seaweed and dragging, so if you anchor, be sure to set the hook well. Anchor north of the mooring field on the west side of the harbor or rent a mooring from the **Swan's Island Boathouse (207-526-4207)**.

These areas are indicated on the chartlet in **Figure 3** below.



Not to be used for navigation. Use NOAA Charts: 13313, 13312

Figure 3. Burnt Coat Harbor

Swans Island

44° 07.97'N 68° 26.74'W

Here crews will be on their own for dinner – get together for potlucks, have some quiet time on your own boat, or head ashore alone or in groups for lobster dinner at the Fishermen's Co-Op or Kent's Wharf.

High tide is approximately 20 minutes before high at Portland. **Mean tidal range is about 9.5 feet.**

Thursday, 8/14—Northeast Harbor – 17 nm

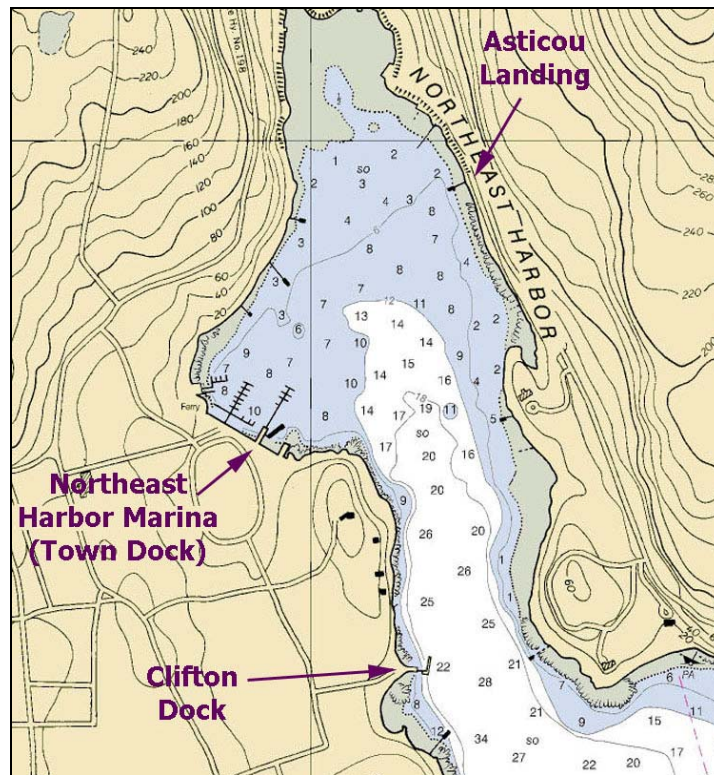
From Burnt Coat Harbor, we'll cross Blue Hill Bay to Mount Desert Island and Northeast Harbor. We'll be here both Thursday afternoon and all day Friday, so we've got lots of time to explore. From Northeast Harbor we can take advantage of the island's public transportation and visit [Bar Harbor](#) or [Acadia National Park](#). Take your dinghy across the harbor to [Asticou Landing](#) and visit the [Asticou and Thuya Gardens](#). Shops and restaurants abound and there's a market and laundromat nearby.

This is a busy harbor with lots of boats and a full range of marine services. It is not possible to anchor in Northeast Harbor, nor is it possible to reserve a mooring in advance of the day you arrive. Since we'll be arriving on Thursday, getting a mooring shouldn't be a problem. Moorings are available on a first-come, first-served basis from **Northeast Harbor Marina (VHF Ch. 9, 16 or 68; 207-276-5737)** – this is the “**town dock**”. Once you reach the **flashing red nun “2”**, hail the **Harbormaster on VHF Ch. 9/16/68** to arrange for a mooring, float or slip.

The town moorings are identified by **bright green pickup buoys** and 3 digits on a float. They vary by weight. Boats 40-50 feet should use 400-series moorings; 30-40 feet should use 300-series moorings; and 20-30 feet should use 200-series moorings. The fees are reasonable with floats starting at \$25 per night for 300 and 400 series moorings.

Water and pumpout facilities are available at the town dock. If you need fuel, it can be had at **Clifton Dock (VHF Ch. 9; 207-276-5308)** which is located farther south towards the harbor's entrance along the western shore. Water and ice are also available at Clifton Dock and they may have moorings if none are available from the town dock. The locations of Northeast Harbor Marina (town dock) and Clifton Dock are indicated on the chartlet in **Figure 4** below.

Dinner on Thursday will be on your own. You're free to make your own plans on that day. There's plenty to see on Mount Desert Island and there are plenty of places to eat ashore, or you can enjoy a quiet evening on your boat, whatever suits you.



Not to be used for navigation. Use NOAA Charts: 13312, 13318, 13321.

Figure 4. Northeast Harbor
Mount Desert Island
44° 17.75'N 68° 16.90'W

Use tide tables for Portland. High tide in Northeast Harbor is approximately 20 minutes before high in Portland. **Mean tidal range is about 10 feet.**

Friday, 8/15 — Northeast Harbor

On Friday, you're free to explore **Mount Desert Island** and **Acadia National Park** (Park Entrance Fee: \$5) on your own or in groups. There's plenty of natural scenery, hiking trails, and of course the free shuttle bus that will take you around the island. The buses will also take you to Bar Harbor, Somes Sound and Southwest Harbor if you care to visit those places.

In the evening, we'll gather for a group dinner ashore. Since this is a Friday night at the height of summer in one of most popular destinations in Maine, we'll need to make reservations well in advance. Please register early, so we know how many to people to expect for dinner reservations!

Before you leave Mount Desert Island, we highly recommend you take your boat up **Somes Sound**. Somes Sound is located just west of Northeast Harbor and is the only fjord on the U.S. Atlantic coast and is well worth the trip. (Speaking of fjords, there is another fjord which is accessible to east coast boaters and that's the [Hudson River Fjord](#) in the Hudson Highlands of New York.)

Thank you very much for sailing with us and we hope you enjoy this little bit of Maine.

Registration Fees:

CDSOA Members: **NO REGISTRATION FEE**

Non-CDSOA Members (per boat): **\$5.00 (pay at the event)**

Please register online by **AUGUST 5, 2008!**

http://www.capedory.org/fleetevents/NE-2008-MaineCruise_regform.html

Please register early so we can plan for the group dinner reservations.

Any questions? Please contact Event Organizers
Cathy Monaghan at 732-381-3549
or Carl Thunberg at 603 226-4638 or by cell at 603 219-5670.

***ALL OWNERS OF BOTH CAPE DORY AND ROBINHOOD POWER AND SAILBOATS,
CDSOA MEMBERS AND NON-MEMBERS, ARE WELCOME TO ATTEND.***

**All captains are responsible for their own navigation and the safety of their
vessels and crew.**

**USE NOAA CHARTS# 13302, 13305, 13308, 13312, 13313, 13316, 13318,
AND 13321.**

Web Resources:

Acadia National Park: <http://www.nps.gov/acad/>

Bar Harbor & Acadia National Park: <http://www.barharborinfo.com/>

Maine Coast Internet Guide: <http://www.coastguides.com/>

Maine Harbors: <http://www.maineharbors.com/>

Maptech.com: <http://www.maptech.com/>

Mount Desert Land & Garden Preserve: <http://gardenpreserve.org/index.html>