



# CDSOA Northeast Fleet Rendezvous 2008

**Buzzards Bay, Massachusetts**

**July 20 - 22**

**Please REGISTER BY JULY 10th!**

Questions? Contact Event Organizer **Joe Myerson** Ph: 978-779-0321 (home), 978-835-2206 (cell); myerjoe@earthlink.net  
Or Fleet Captain **Carl Thunberg** Ph: 603-226-4638 (home), 603 219-5670 (cell); cthunberg@nobisengineering.com

## **About New Bedford – “The Whaling City”**

New Bedford has a rich maritime history. The first residents in the New Bedford area were the Wampanoag Indians. The Wampanoag hunted whales in canoes and then hauled them to shore. The first English explorer to set foot in New Bedford was Bartholomew Gosnold, in 1602. New Bedford was incorporated in 1787. The first settlers in New Bedford also hunted whales in small schooners and sloops. In the mid 1800s, New Bedford was the most successful whaling port in the world, with 329 whaling vessels in its fleet and employing 10,000 men (sorry ladies). The discovery of petroleum fuels in 1859 led to a quick decline of the whaling industry. The last whaling voyage left New Bedford in 1925. With the decline in whaling, came the rise of textile and manufacturing industries and by 1881 New Bedford was one of the leading textile manufacturing centers of the world. The City was devastated by the Hurricane of 1938, causing billions of dollars of damage and leaving 600 people dead. The Hurricane Barrier was completed in 1966, protecting the inner harbor and downtown. Today, New Bedford's maritime industry continues with a fleet of 250 fishing boats bringing in fish and scallops.

There is much to see and do in New Bedford. The waterfront has been re-developed as the Whaling National Historic Park, featuring the New Bedford Whaling Museum, Roche Jones Duff House, Seamen's Bethel Chapel, Fort Rodman, and Buttonwood Park Zoo, not to mention the historic working waterfront.

On the other side of the harbor lies historic Fairhaven and Fort Phoenix. The town's most remarkable features are the magnificent European-style public buildings built between 1885 and 1906 by Standard Oil Company millionaire Henry Huttleston Rogers, a native of the town. But Fairhaven is also the home of circumnavigator Joshua Slocum and a memorial park marks the starting point of his historic solo trip.

Your Rendezvous Committee has planned a number of scheduled events, while leaving plenty of free time to explore the waterfront.

### ***Approaching New Bedford Harbor***

The entrance to New Bedford Harbor (the city of New Bedford is to the west; the town of Fairhaven to the east) at the hurricane barrier is about 12.5 nautical miles southwest of Mattapoisett, 4.8 nm northeast of Apponagansett Bay (outside Padanaram Harbor at the breakwater) and about 12.7 nm north of Cuttyhunk Harbor. The hurricane barrier was constructed in 1966 following years of devastation by hurricanes in the 1930s, 40s, and 50s.

The main approach to New Bedford Harbor from Buzzards Bay is well-marked. Approaching New Bedford from the south, leave a wide berth around Negro Ledge (GC"3") keeping it well to port. Continue northward towards the 30-ft. deep channel between Brooklyn Rock (G"7" FI G 2.5s GONG) and Henrietta Rock (R"6" FI R 2.5s). Follow the well-marked channel passing the Butler Flats lighthouse (G"11" FI G 2.5s and R"10" FI R 2.5s). Continue along the channel and through the 4600-ft. hurricane barrier (called "the dike" by the local population).

To pass through the gates of the hurricane barrier (150 wide), be aware that the tidal flow in the dike opening can reach more than 2 knots in either direction. **Keep an eye out for traffic at all times – especially the Fast Ferry which can really sneak up on you. Stay to the right of the channel – or just outside of the channel on either side.**

On the starboard side is the Fairhaven waterfront, a mixture of commercial, fishing, and recreational boat yards and marinas. Fairhaven Shipyard and Kelly's Marine can accommodate yachts up to 135 ft. with a 16-ft. draft. Straight in front of you is the New Bedford-Fairhaven Bridge between Fish and Pope Islands and Crow Island will be off to starboard.

Most of the marinas and dock space is found beyond Crow Island, although you can enter Captain Leroy's (where you may be able to find a slip or mooring) or the much larger Pope's Island Marina by continuing on in the harbor channel. On the starboard side, Fairhaven, you'll find Fairhaven Shipyard, Kelly's Marine, the (Fairhaven) Town Ramp, the Acushnet River Safe Boating Club/USCG Aux. Marina (private), a GAS DOCK, and the Seaport Marina.

If you can get through the New Bedford-Fairhaven Bridge (currently opens at 15 minutes past the hour or by request after 8 pm -- but check by hailing the bridge tender on **VHF Ch. 13**), you'll find Bayliner Marina, Cozy Cove Marina, Moby Dick Marina, and Niemiec Marine, among others.

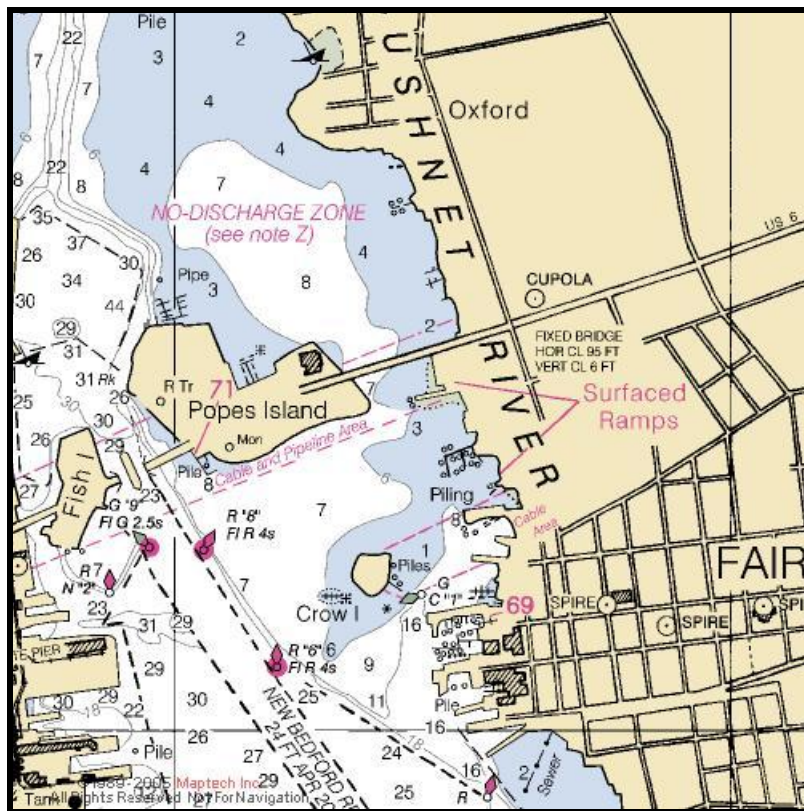
**Moorings and Launch Service**

**Moorings \$30/night**

New Bedford Harbor is a busy working harbor. Moorings and dock space is limited. We have reserved a block of 15 moorings through **Whaling City Tours** on Popes Island in the center of New Bedford Harbor. You do not need to reserve a mooring. Your registration is your reservation. The water depth at MLW in the mooring field is 12 feet, which should accommodate all *Cape Dory* or *Robinhood* boats. Moorings cost **\$30/night** and they do not take credit cards. Bring cash. **Whaling City Tours** offers a launch service for **\$4/trip**. Hail "**Whaling City Launch**" on **VHF Ch. 72** or you can call the launch boat directly at (508) 207-6994. Also, Don Paquette, CDSOA Membership Chairman, has generously offered to operate his *Bayliner* as a water taxi during the Rendezvous. Thanks Don!

Boats wishing to raft up together may do so for a price of **\$15/boat**. Please indicate your intent to raft up on your registration form, as **Whaling City Tours** will need to put a raft-up party on a heavier mooring. Refer to the chartlet below. The mooring field is not shown on the chartlet because there are moorings around the entire island except the west side which is the shipping channel, and they don't know yet which moorings we will be assigned. Hail "**Whaling City Launch**" as you get close and they will direct you to the mooring field.

Here are a couple good links if you want more info about the harbor & marinas:  
<http://www.newbedford-ma.gov/PortofNewBedford/GettingAround/Transient.html> or  
<http://www.southcoastnavigator.com/navigator/nbh.htm#getting>



**Pope's Island Mooring Field**  
**N 41° 38' W 70° 54'**  
**Use NOAA Chart 13229**  
High Tide is 7 minutes later  
than Newport, RI

## Overview of Planned Activities

### Sunday, July 20

**Arrival of Boats** – Boats should be arriving in New Bedford throughout the day. As you arrive, hail “**Cape Dory Fleet**” on **VHF Ch. 68. Channel 68** will be used for all Fleet Communications. All of the reserved moorings are located in the same mooring field off Popes Island, so once contact has been made, Fleet communications should be minimal.

#### **Welcome Dinner**

Activities begin at 6:00 pm Sunday night with a welcome dinner ashore. Everyone will be ordering from the menu and paying for their own meals.

### Monday, July 21

#### **Bus Tour to Edson Marine, Schaefer Marine & New England Ropes – 10:00 am**

The folks at Edson and Shaeffer Marine have generously offered to provide a bus to transport us to their facilities and provide a guided tour.

Another stop that is rope related - <http://www.rwrope.com> R&W Rope Warehouse has a big warehouse of ropes of all kinds and beautiful bronze hardware from a company in England. They rigged – or at least provided the rope for the boats in “**Master & Commander**” and they sell at a good discount. They are about 5 minutes from Edson/Shaeffer on the way back to Fairhaven.

#### **Tour Whaling National Historic Park – Afternoon**

During the afternoon, you’ll have the opportunity to explore the historic waterfront. We can either stay as a group or split up into smaller groups, as you wish. This time is yours. Attractions include the Roche Jones Duff House, Seamen’s Bethel Chapel, Fort Rodman, Buttonwood Park Zoo, and the Schooner *Ernestina*.

#### **Reception at New Bedford Whaling Museum – 6:00 pm**

**Cost \$25**

We have reserved the New Bedford Whaling Museum for a catered reception in their function hall. The reception will be our major social event of the Rendezvous. Before the reception, we’ll have a guided tour of the Whaling Museum. During the reception, we’ll have an electric piano available and past Fleet Captain Bob Emmons has graciously offered to play for a while, and we hear Bob’s daughter may also play for us. Anyone with an instrument is welcome to bring it along and we’ll have a pick-up jam session with whoever shows up. Please indicate on the registration form if you might bring an instrument.

### Tuesday, July 22

#### **Fun Race Across Buzzards Bay to Red Brook Harbor – 20 nm**

On Tuesday morning we’ll depart New Bedford and we’ll have a good-natured fun “race” across Buzzards Bay to Red Brook Harbor. The top prize for the race will be bragging rights. There will be no committee boat, no protests, and no formal finish line. Just line honors to Red Brook Harbor. For those who don’t want to “race” that’s fine too.

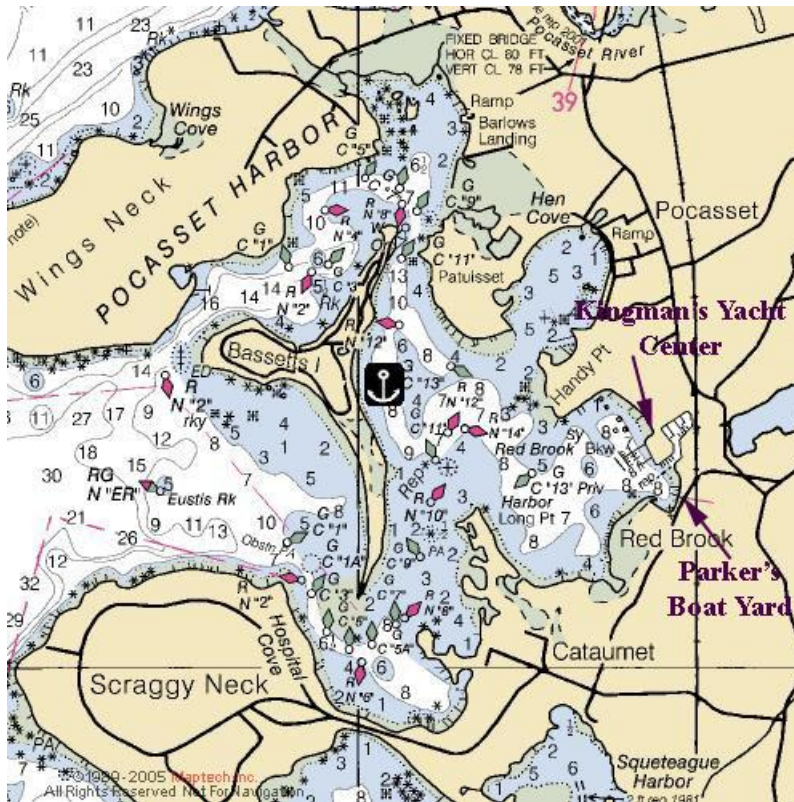
For those who want to get a head start in planning your race course strategy, here’s the course.

- Start line will be between G”7” and R”6” at New Bedford Harbor Entrance.
- Keep R”2SE” off West Island to port
- Keep Cleveland East Ledge light to port. **Do not enter Cleveland Ledge Channel**, as it is an approach channel to the Cape Cod Canal.
- Finish at RN”2” off Scraggy Neck. Follow the instructions below as you enter

As you approach Red Brook Harbor from Buzzards Bay, keep the R”2” off Scraggy Neck to starboard and approach the inlet on either side of Eustis Rock, clearly marked by the red/green nun “ER”. Round the sand bar off Bassetts Island. The channel is narrow and winding but very well marked. Once you round the sand bar, Red Brook Harbor opens up before you. See the chartlet below for the location of the anchorage and barbecue.

For Tuesday night, as many as 10 moorings have been set aside for Cape Dorians at **Parker's Boat Yard** (508-563-9367; [www.parkersboatyard.com](http://www.parkersboatyard.com)) and an additional 10 moorings will be available at Kingman Yacht Center (508-563-7136, ask for Tara; [www.kingmanyachtcenter.com](http://www.kingmanyachtcenter.com)). Parker's moorings cost **\$45**, while Kingman's cost **\$50**. In addition, there is plenty of room to anchor off Bassett Island (see chart inset), where the holding ground is good. Those reserving moorings should identify themselves as being with the "Cape Dory Group." Both marinas have free launch services for guests, as well as showers and restrooms. Parker's launch normally ceases operation at 9 p.m., but the crew will gladly stay later (a generous Cape Dory tip would be appreciated, according to Patti Parker).

**Please contact either marina directly to reserve a mooring a slip.**



**Red Brook Harbor**  
**N 41° 40.5' W 70° 37'**  
**Use NOAA Chart 13236**

**Barbecue at Parker's – 6:00 pm**

**Cost \$15**

We'll cap off our planned events with a barbecue at the clubhouse of the Red Brook Harbor Yacht Club at Parker's Boat Yard. The small facility, located at the base of Parker's dinghy dock, has two charcoal grills and a gas grill and some picnic tables. There's an attached recreation room (with restrooms and showers.). Additional tables, chairs and a larger grill (if needed) will be available through the Cataumet Club (Joe Myerson's neighborhood club).

## ***Driving Directions to New Bedford***

For those driving to the Rendezvous by car, here are directions:

### ***Driving Directions to Popes Island***

***From North (Boston)*** - Follow Route 24 South to Route 140 South to Route 195 East to Route 18 South to Route 6 East . *Pope's Island Marina on right side after the New Bedford/Fairhaven Bridge.*

***From West (Rhode Island)*** - Follow Interstate 95 to Route 195 East to Route 18 South to Route 6 East. *Pope's Island Marina on right side after the New Bedford/Fairhaven Bridge.*

***From East (Cape Cod)*** - Follow Route 195 West to Route 18 South to Route 6 East. *Pope's Island Marina on right side after the New Bedford/Fairhaven Bridge.*

### ***Driving Directions to Whaling Museum***

***From Boston and points north*** - Route 93 South {13 miles}. Hwy. forks in Braintree; stay right. Sign reads: "93 South, Dedham-Providence." {3 miles}. \* Exit 4: Route 24 South. This is a left lane exit {24 miles}. \* Exit 12: Route 140 South {19 miles}. \* Exit 2A: Interstate 195 East. {1.3 miles}. \* Exit 15: Downtown - Route 18 South {1.1 miles}. \* TURN RIGHT at lights onto Elm Street. Public parking garage two blocks on right.

***From Cape Cod and points east*** - Route 6 West \* Route 25 \* Route I-195 West \* Exit 15: Downtown - Route 18 South \* TURN RIGHT at lights onto Elm Street. Public parking garage two blocks on right.

***From Providence and points west*** - Route I-95 \* Route I-195 East \* Exit 15: Downtown - Route 18 South \* TURN RIGHT at lights onto Elm Street. Public parking garage two blocks on right.

### ***Driving Directions From New Bedford/Fairhaven to Red Brook Harbor***

*Take I-195 East toward Cape Cod.*

*Exit right at end of I-195 to Rte. 25 (Follow signs to "Cape Cod")*

*Rte. 25 ends at Bourne Bridge. Cross bridge and follow directions below:*

### ***Driving Directions to Red Brook Harbor (Parker's Boat Yard)***

*Red Brook Harbor is on the Cape Cod side of Buzzards Bay, so directions are for people coming from Off Cape, starting with the Bourne Bridge (at the terminus of MA Route 25, which is an extension of I-495 South).*

#### ***From the Bourne Bridge (approximately 15 minutes)***

*Follow Route 28 from the Bourne Bridge heading south towards Falmouth for approximately 6 miles. As you enter the Otis Rotary, turn right onto the first exit. At the set of lights, turn left onto Route 28A. Take the third right onto Longhill Road. At the Stop Sign, bear left onto County Road. Follow County Road past a church on your left and a cemetery on your right. After the cemetery, take your second right onto Red Brook Harbor Road. At the Stop Sign, continue straight through the intersection and up the hill. The boat yard office is on your right - 68 Red Brook Harbor Road.*

## Lodging

For those driving to the event that may be looking for hotel accommodations, these are some local hotels and bed & breakfast choices. Please note that we have not researched the costs or quality of these hotels. This is provided for your information only.

### **Holiday Inn Express** (also has slips)

Right next to Popes Island.

110 Middle Street

Fairhaven, MA 02719

508-997-1281 local

800-356-3584 reservations

### **Hampton Inn**

1 Hampton Way

Fairhaven, MA 02719

508-990-8500

### **Briar Rose Bed and Breakfast**

146 Main Street

Fairhaven, Massachusetts 02719

(508) 994-ROSE(7673)

Toll Free (866) 975-ROSE(7673)

[www.briarrosebandb.com](http://www.briarrosebandb.com)

### **Delano Homestead Bed and Breakfast**

39 Walnut Street

Fairhaven, Massachusetts 02719

(508) 992-5552

[www.delanohomestead.com](http://www.delanohomestead.com)

### **Fairhaven Harborside Inn & Spa**

1 Main St

Fairhaven, MA 02719

(508) 990-7760

### **Davenport House Bed & Breakfast**

124 Cottage Street

New Bedford, Massachusetts 02740

(508) 999-1177

### **Bed and Breakfast at Captain Haskell's Octagon House**

347 Union Street

New Bedford, Massachusetts 02740

(508) 999-3933

[www.theOctagonHouse.com](http://www.theOctagonHouse.com)

### **Wayfarer Bed & Breakfast**

65 East Clinton Street

New Bedford, Massachusetts 02740

(508) 994-8881

[www.wayfarerbb.com](http://www.wayfarerbb.com)

---

### **Questions regarding this event?**

Please contact **Event Organizer Joe Myerson** at (978) 779-0321(home) or 978-835-2206 (cell) or via e-mail at [myerjoe@earthlink.net](mailto:myerjoe@earthlink.net)

OR

Fleet Captain Carl Thunberg at (603) 226-4638 (home) or (603) 219-5670 (cell) or via e-mail at [cthunberg@nobisengineering.com](mailto:cthunberg@nobisengineering.com)

---

**All owners of both Cape Dory and Robinhood power and sailboats, CDSOA members and non-members, are welcome to attend.**

**All captains are responsible for the safety of their vessels and crew.**

**Use NOAA Charts # 13230, 13229, 13236, 13218, 13232s**



# CDSOA Northeast Fleet

## Rendezvous 2008 - Buzzards Bay

**\*\* Please register by July 10th \*\***

**Fleet Captain:**  
Carl Thunberg  
(603) 226-4638  
**Fleet Secretary:**  
Joe Montana  
(860) 767-3563  
**Fleet Lieutenant:**  
Dick Barthel  
(860) 627-0840

Questions? Contact Event Organizer **Joe Myerson** Ph: 978-779-0321 (home), 978-835-2206 (cell); myerjoe@earthlink.net  
Or Fleet Captain **Carl Thunberg** Ph: 603-226-4638 (home), 603 219-5670 (cell); cthunberg@nobisengineering.com

**Captain/1st Mate:** \_\_\_\_\_ **CDSOA#** \_\_\_\_\_

**Address:** \_\_\_\_\_

Street City State Zip

**Tel. No(s):** \_\_\_\_\_ **E-mail:** \_\_\_\_\_

**Additional Crew Names:** \_\_\_\_\_

**Boat Name:** \_\_\_\_\_ **Model:** \_\_\_\_\_ **Color (hull/sails):** \_\_\_\_\_

**Hailing Port (indicated on stern):** \_\_\_\_\_

Do you have Crew Berth(s) Available for out of area CDers? NO  YES  Number available: \_\_\_\_\_

Boatless? Need a crew berth on a participating boat? NO  YES  Number needed: \_\_\_\_\_  
(Nice way to meet the rest of the 'CD world')

**Shore Point of Contact (has your Float Plan):**

**Name:** \_\_\_\_\_ **Tel. No.(s):** \_\_\_\_\_

**Comments:** \_\_\_\_\_

On which days can we expect to see you?  Sunday  Monday  Tuesday

**DINNER FEES: Welcome Dinner (Sunday., July 20th):**

Number of people in my group for dinner: \_\_\_\_\_ You will be paying for your own meal but we need a headcount for the restaurant.

**Whaling Museum Reception (Monday, July 21st):**

I am bringing an instrument for the jam session.  Yes  No Number of people in my group for reception: \_\_\_\_\_ @ **\$25.00** per person \$ \_\_\_\_\_

**Barbecue at Parker's (Tuesday, July 21st):**

Number of people in my group for barbecue: \_\_\_\_\_ @ **\$15.00** per person \$ \_\_\_\_\_

**Registration Fee (per boat):** FREE (CDSOA # \_\_\_\_\_) **\$5.00 (Non-CDSOA)** received by July 10 \$ \_\_\_\_\_

**Late Fee (per boat):** \$5.00 (CDSOA # \_\_\_\_\_) **\$10.00 (Non-CDSOA)** received after July 10 \$ \_\_\_\_\_

**Would you like a Rendezvous T-shirt?** (After July 10 cannot guarantee T-shirts.)

Number of T-Shirts @ \$18.00 each Qty S: \_\_\_\_\_ Qty M: \_\_\_\_\_ Qty L: \_\_\_\_\_ \$ \_\_\_\_\_

Qty XL \_\_\_\_\_ Qty XXL \_\_\_\_\_ \$ \_\_\_\_\_

**Total Enclosed:** \$ \_\_\_\_\_

Please indicated if you're interested in any of the optional excursions listed below.

Edson/Shaeffer/New England Ropes Tour  Whaling National Historic Park

**Whaling City Tours -- Moorings \$30/night, \$15/night if rafted -- Launch Service \$4/trip**

I want my own mooring.  I would like to raft on a mooring with another CD.

**Captain's (signature):** \_\_\_\_\_ **Date:** \_\_\_\_\_

**Make check payable to: Joe Myerson**  
**Mail to: CDSOA c/o Joe Myerson, 749 Main St., Bolton MA 01740**